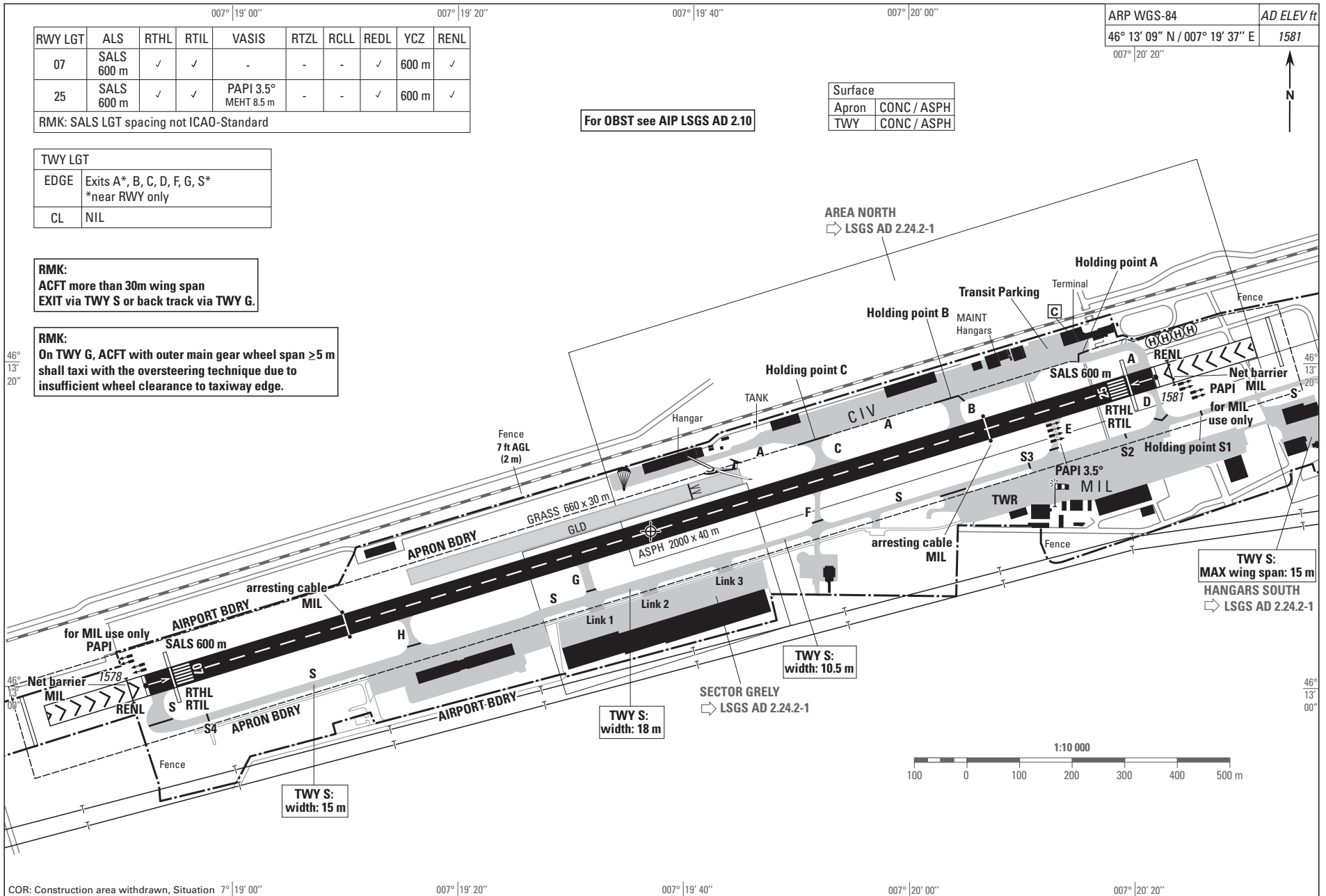


DO NOT USE FOR REAL LIFE NAVIGATION

SKYGUIDE, CH-8602 WANGEN BEI DUBENDORF

AMDIT 011 2013



RWY LGT	ALS	RTHL	RTIL	VASIS	RTZL	RCLL	REDL	YCZ	RENL
07	SALS 600 m	✓	✓	-	-	-	✓	600 m	✓
25	SALS 600 m	✓	✓	PAPI 3.5° MEHT 8.5 m	-	-	✓	600 m	✓

RMK: SALS LGT spacing not ICAO-Standard

For OBST see AIP LSGS AD 2.10

Surface	
Apron	CONC / ASPH
TWY	CONC / ASPH

TWY LGT	
EDGE	Exits A*, B, C, D, F, G, S* *near RWY only
CL	NIL

RMK:
ACFT more than 30m wing span
EXIT via TWY S or back track via TWY G.

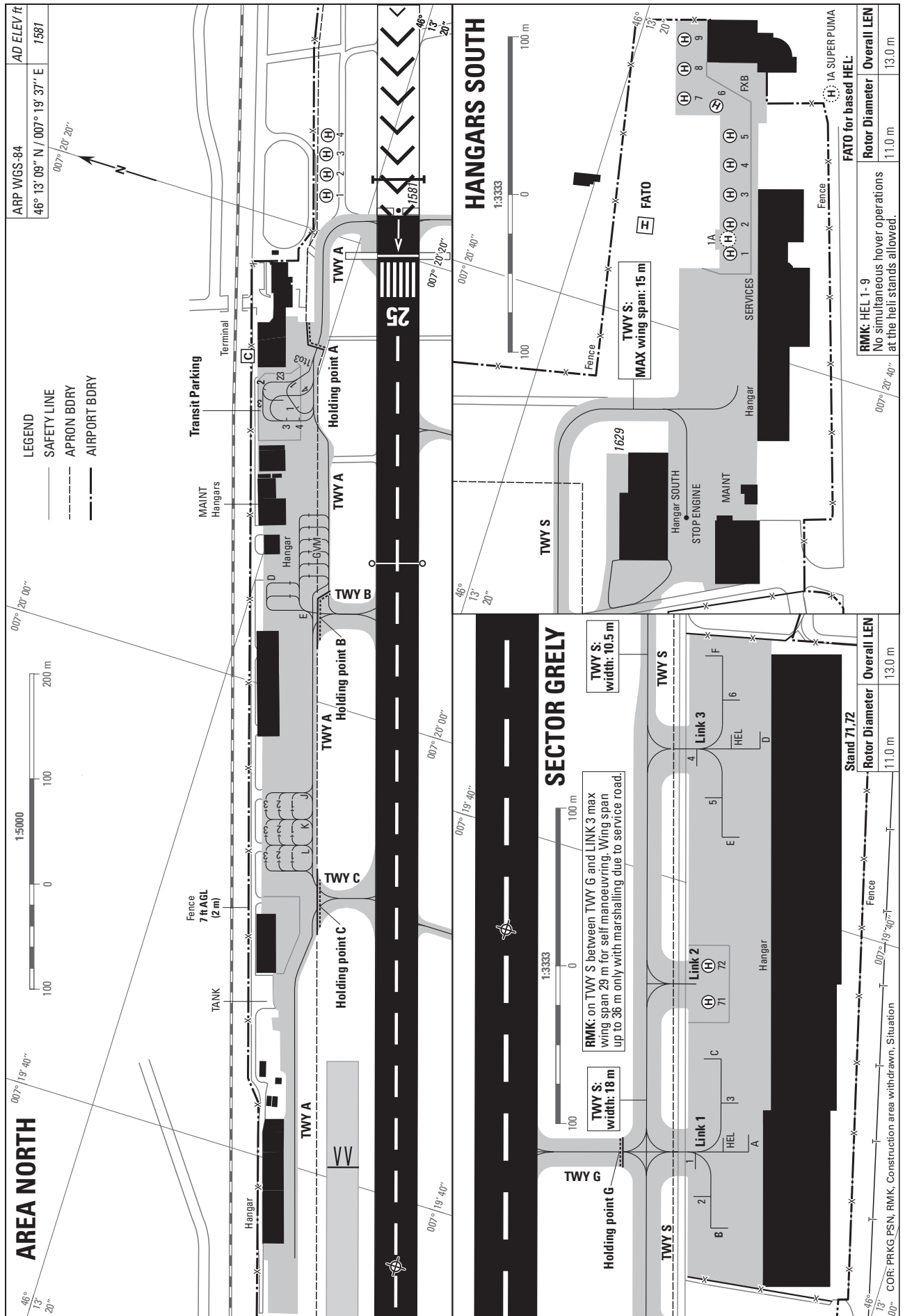
RMK:
On TWY G, ACFT with outer main gear wheel span ≥ 5 m
shall taxi with the oversteering technique due to
insufficient wheel clearance to taxiway edge.

TWY S:
MAX wing span: 15 m
HANGARS SOUTH
LSGS AD 2.24.2-1

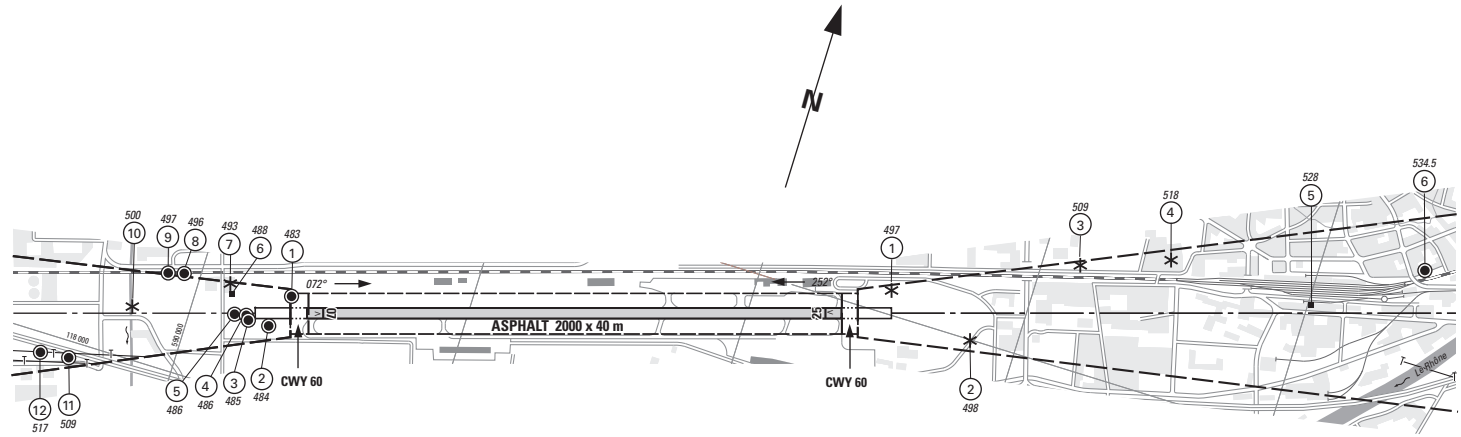
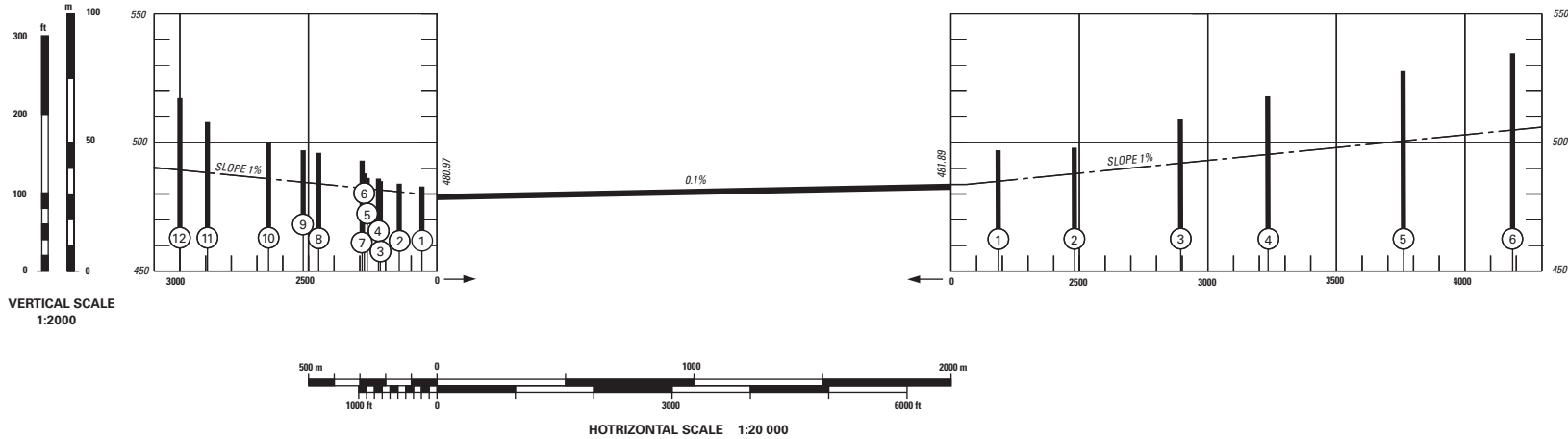
AIP SWITZERLAND
Aerodrome Chart

LSGS AD 2.24.1 - 1
17 OCT 2013

DO NOT USE FOR REAL LIFE NAVIGATION



VAR 1° E (11)



LEGEND

- ① Identification number
- * Tree, shrub
- Pole, tower, spire, antenna, etc.
- Building, large structure
- Railroad
- Transmission line, overhead cable

OBST ELEV in m
AD ELEV in m

ORDER OF ACCURACY ACCORDING TO ICAO REQUIREMENTS

CTN: MIL net barrier within runway strip

RWY: 07-25

RWY 07	DECLARED DISTANCES	RWY 25
2000	TAKE-OFF RUN AVAILABLE	2000
2060	TAKE-OFF DISTANCE AVAILABLE	2060
2000	ACCELERATE STOP DISTANCE AVAILABLE	2000
1955	LANDING DISTANCE AVAILABLE	1960

AMDT RECORD		
No.	DATE	ENTERED BY

COR: OBST, additional information

9th Edition

A. Flotron AG, CH-3860 Meiringen

© 2013 Swisstopo, CH-3084 Wabern

DO NOT USE FOR REAL LIFE NAVIGATION

SKYGUIDE, CH-8602 WANGEN BEI DUBENDORF

NOTES:

The ATC surveillance minimum altitude chart shows the lowest altitude for the APPROACH / DEPARTURE sectors of LSGS which may be assigned to an IFR flight under radar vectoring.

The chart may only be used for cross-checking of altitudes assigned while under radar vectoring.

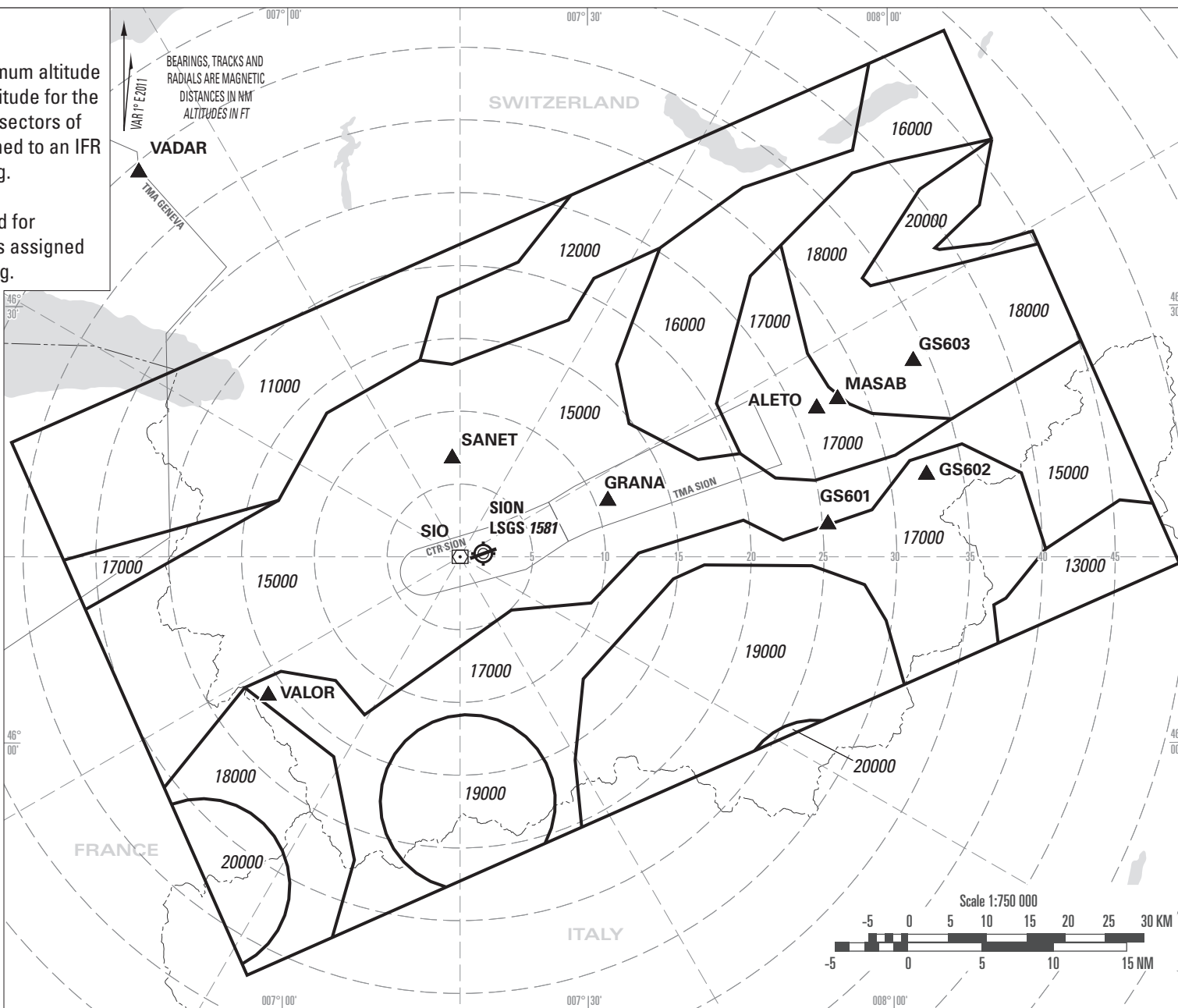
Altitudes: LSGS QNH.
Transition ALT : 17000

Minimum altitudes are calculated according ICAO norms (PANS-ATM Doc 4444 & PANS-OPS Doc 8168).

Minimum altitudes are protected for low temperatures from minus 15 to minus 7 degrees Celsius (LSGS temperature).

Sectors indicated all 30°, distances indicated all 5NM, based on SIO DVOR/DME.

COR: new chart



ATC SURVEILLANCE MINIMUM ALTITUDE CHART (AD TEMPERATURES FROM -15° TO -7°C)

AIP SWITZERLAND

LSGS AD 2.24.13 - 1
09 JAN 2014

AMDT 001 2014