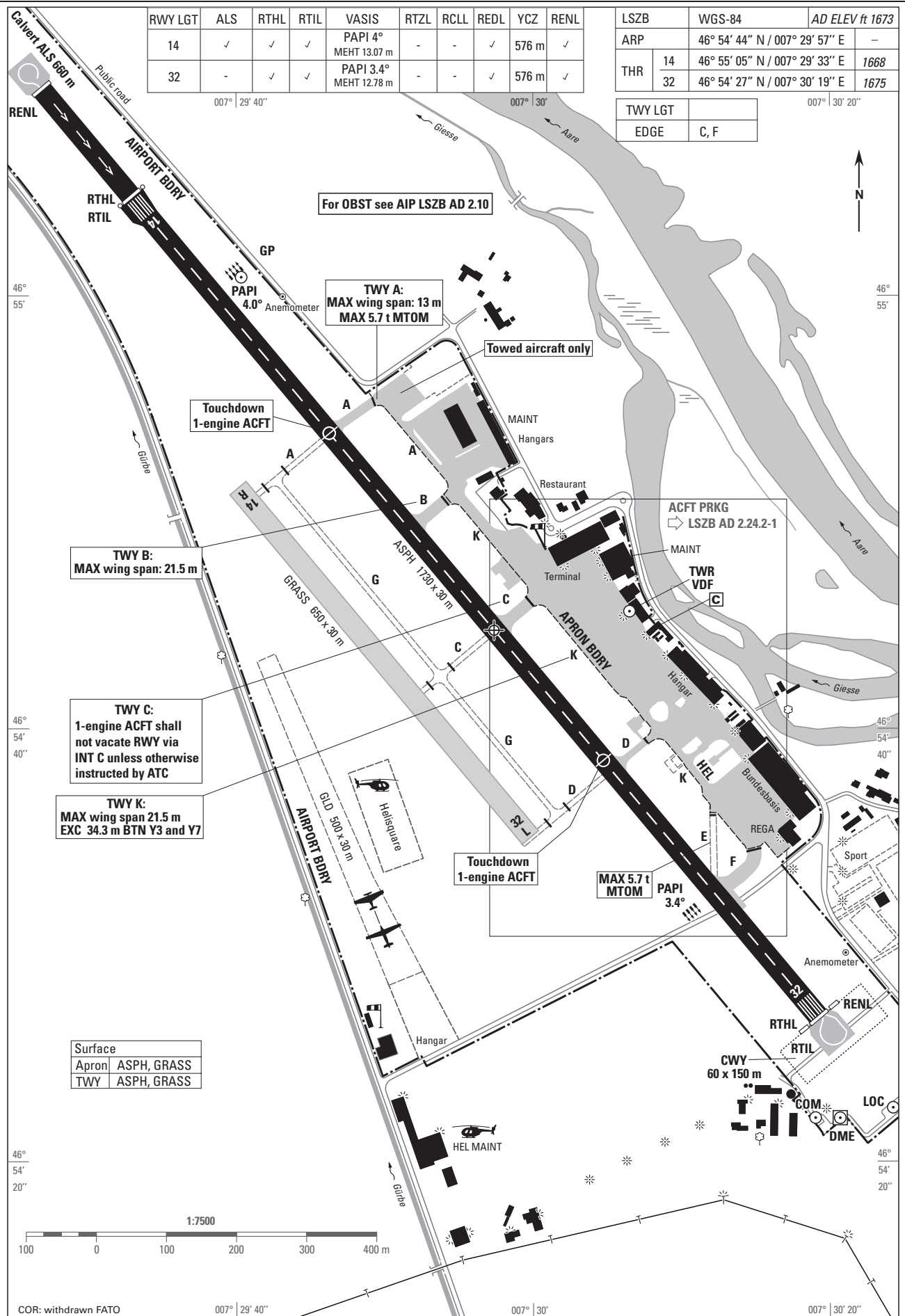
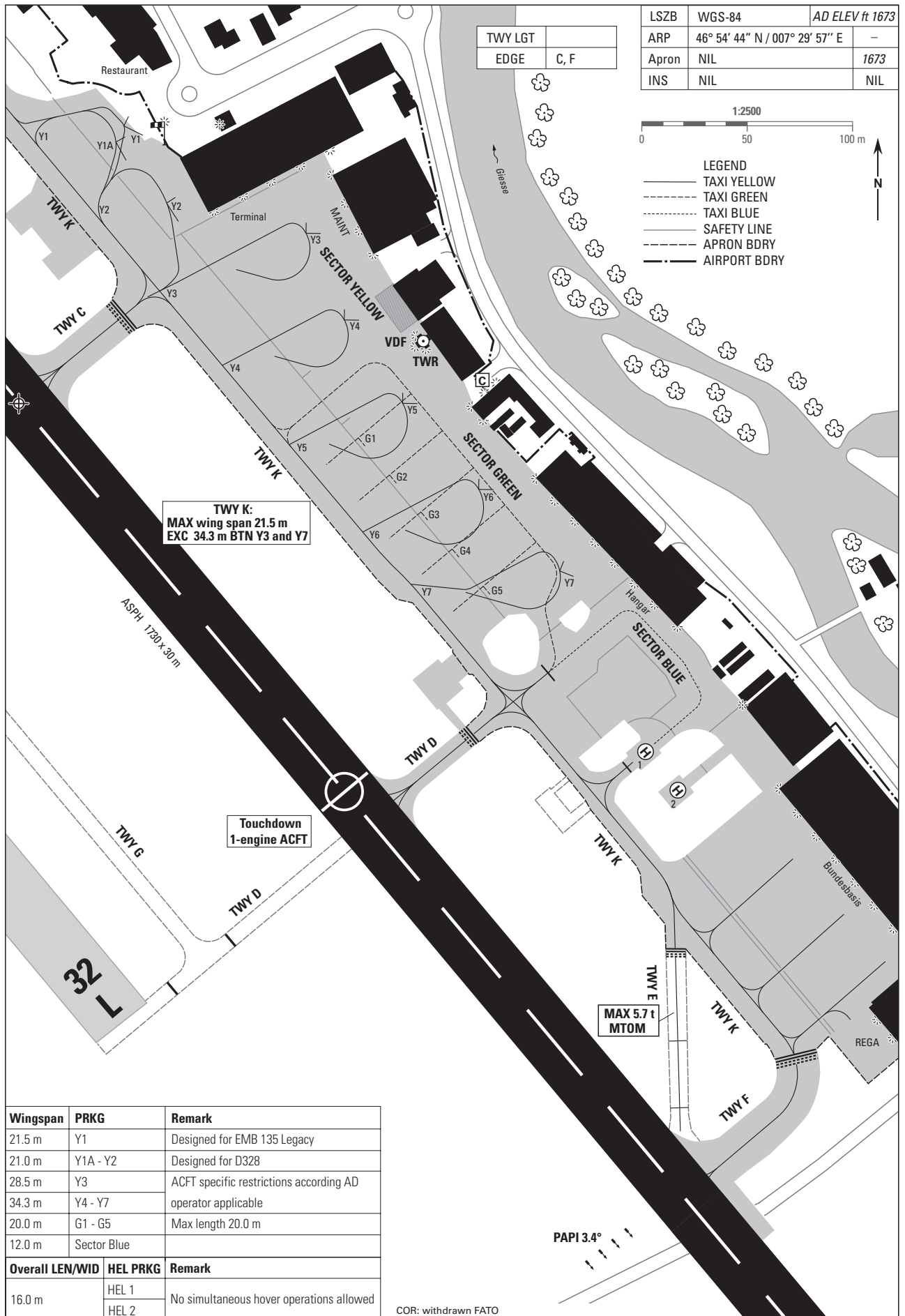


<b>Input Data</b>	
<b>Parameters</b>	<b>Values</b>
Operation Type	0
SBAS Provider	1
Airport Identifier	LSZB
Runway	14
Runway Direction	0
Approach Performance Designator	0
Route Indicator	
Reference Path Data Selector	0
Reference Path Identifier	E14A
LTP/FTP Latitude	465504.5820N
LTP/FTP Longitude	0072932.9760E
LTP/FTP Ellipsoidal Height (metres)	557
FPAP Latitude	465426.5950N
Delta FPAP Latitude (seconds)	-37.9870
FPAP Longitude	0073019.3020E
Delta FPAP Longitude (seconds)	46.3260
Threshold Crossing Height	50
TCH Units Selector	0
Glidepath Angle (degrees)	4
Course Width (metres)	105
Length Offset (metres)	0
HAL	40
VAL	50

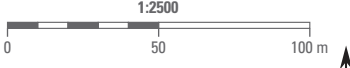
<b>Output Data</b>	
Data Block	10 02 1A 13 0C 0E 00 00 01 34 31 05 0C 8F 22 14 60 26 37 03 C2 29 3A D7 FE EC 69 01 F4 01 90 01 64 00 C8 FA 55 CC 60 10
Calculated CRC Value	55CC6010

LTP Orthometric Height 508.26m





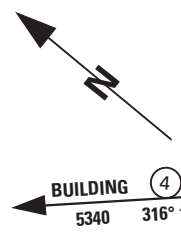
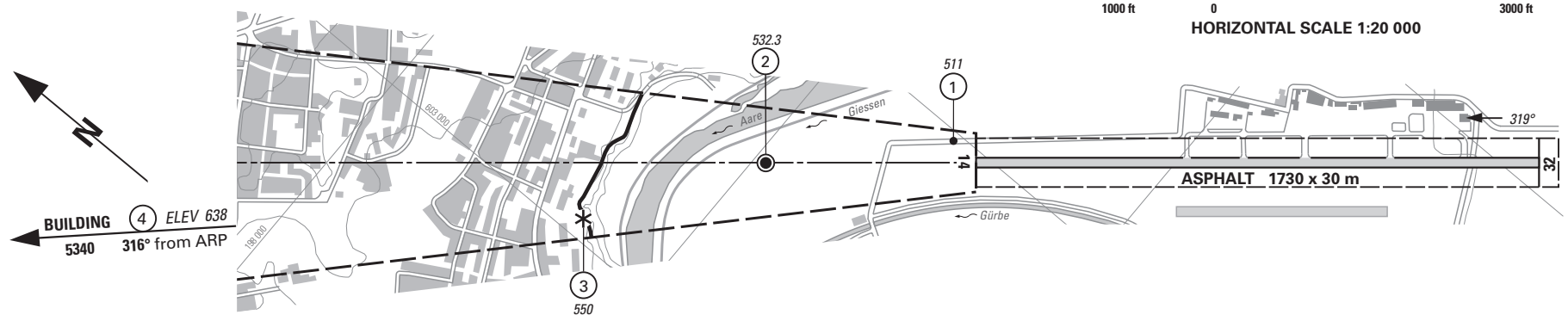
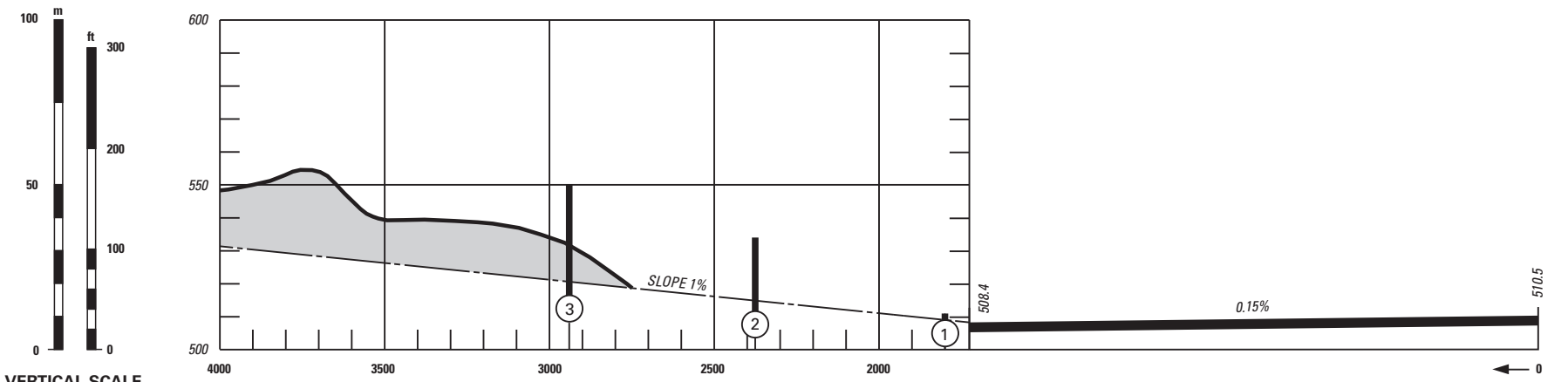
LSZB	WGS-84	AD ELEV ft 1673
ARP	46° 54' 44" N / 007° 29' 57" E	-
Apron	NIL	1673
INS	NIL	NIL



Wingspan	PRKG	Remark
21.5 m	Y1	Designed for EMB 135 Legacy
21.0 m	Y1A - Y2	Designed for D328
28.5 m	Y3	ACFT specific restrictions according AD
34.3 m	Y4 - Y7	operator applicable
20.0 m	G1 - G5	Max length 20.0 m
12.0 m	Sector Blue	
Overall LEN/WID	HEL PRKG	Remark
16.0 m	HEL 1	No simultaneous hover operations allowed
	HEL 2	

COR: withdrawn FATO

VAR 1° E (11)



**LEGEND**

- ① Identification number
  - \* Tree, shrub
  - Pole, tower, spire, antenna, etc.
  - Road
  - ⌒ Terrain penetrating obstruction plane
- OBST ELEV in m  
AD ELEV in m

ORDER OF ACCURACY ACCORDING TO ICAO REQUIREMENTS

© 2011 Swisstopo. CH-3084 Wabern A. FLOTRON A.G. 3860 MEIRINGEN

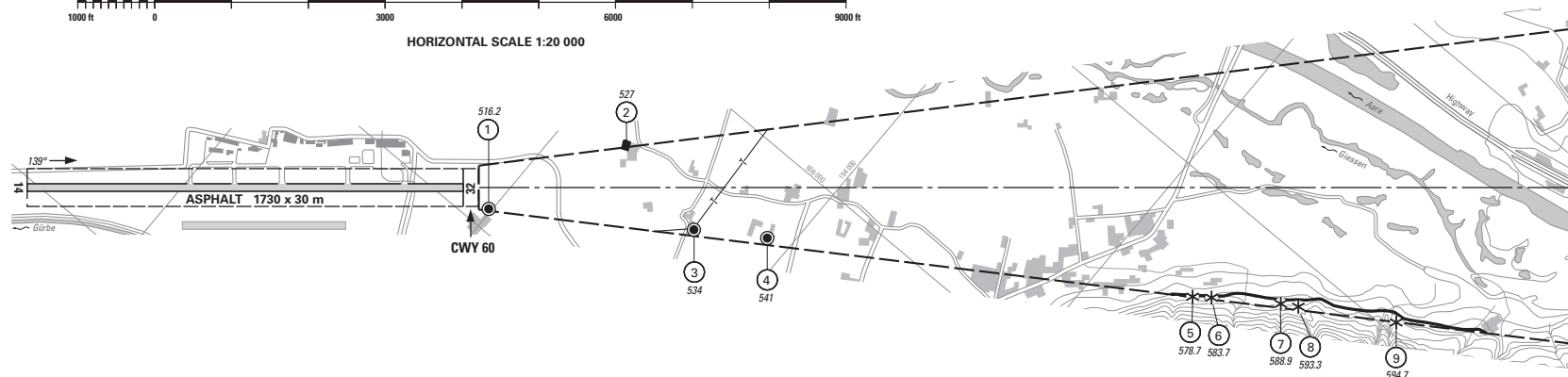
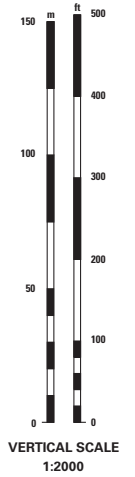
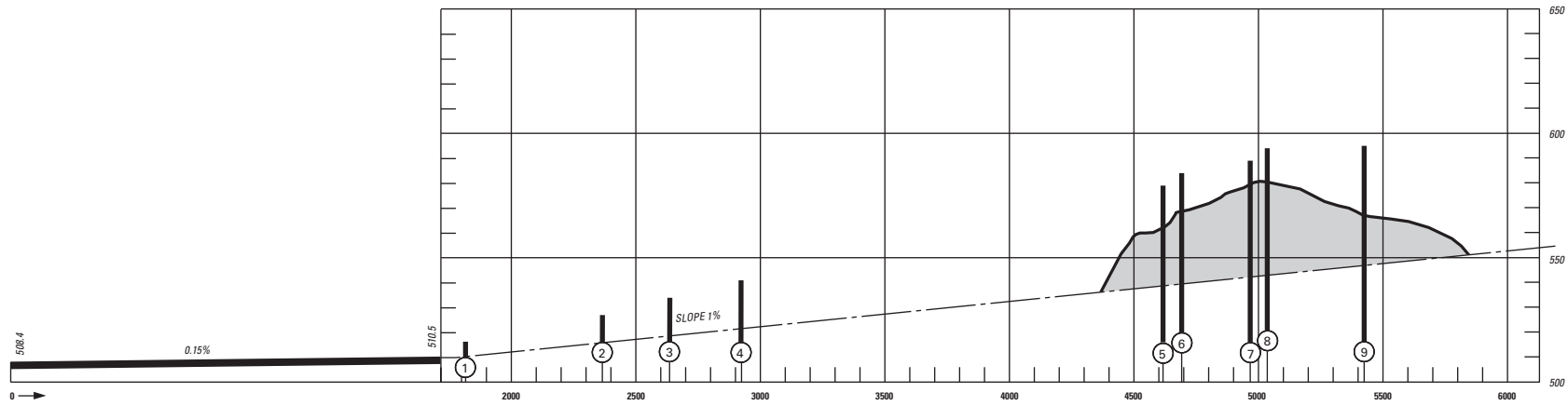
**RWY: 32**

RWY 14	DECLARED DISTANCES	RWY 32
—	TAKE-OFF RUN AVAILABLE	1730
—	TAKE-OFF DISTANCE AVAILABLE	1730
—	ACCELERATE-STOP DISTANCE AVAILABLE	1730
1530	LANDING DISTANCE AVAILABLE	—

AMD T RECORD		
No.	DATE	ENTERED BY

5th Edition COR: OBST

VAR 1° E (11)



**LEGEND**

- ① Identification number
- \* Tree, shrub
- Pole, tower, spire, antenna, etc.
- Building, large structure
- Transmission line, overhead cable
- ⌒ Terrain penetrating obstruction plane

OBST ELEV in m

AD ELEV in m

ORDER OF ACCURACY ACCORDING TO ICAO REQUIREMENTS

**RWY: 14**

RWY 14	DECLARED DISTANCES	RWY 32
1730	TAKE-OFF RUN AVAILABLE	—
1790	TAKE-OFF DISTANCE AVAILABLE	—
1730	ACCELERATE-STOP DISTANCE AVAILABLE	—
—	LANDING DISTANCE AVAILABLE	1730

AMDT RECORD		
No.	DATE	ENTERED BY

**DO NOT USE FOR REAL LIFE NAVIGATION**

**NOTES:**

The minimum vectoring altitude chart shows the lowest altitude for the approach / departure sectors of LSZB which may be assigned to an IFR flight under radar vectoring.

The chart may only be used for cross-checking of altitudes assigned while under radar vectoring.

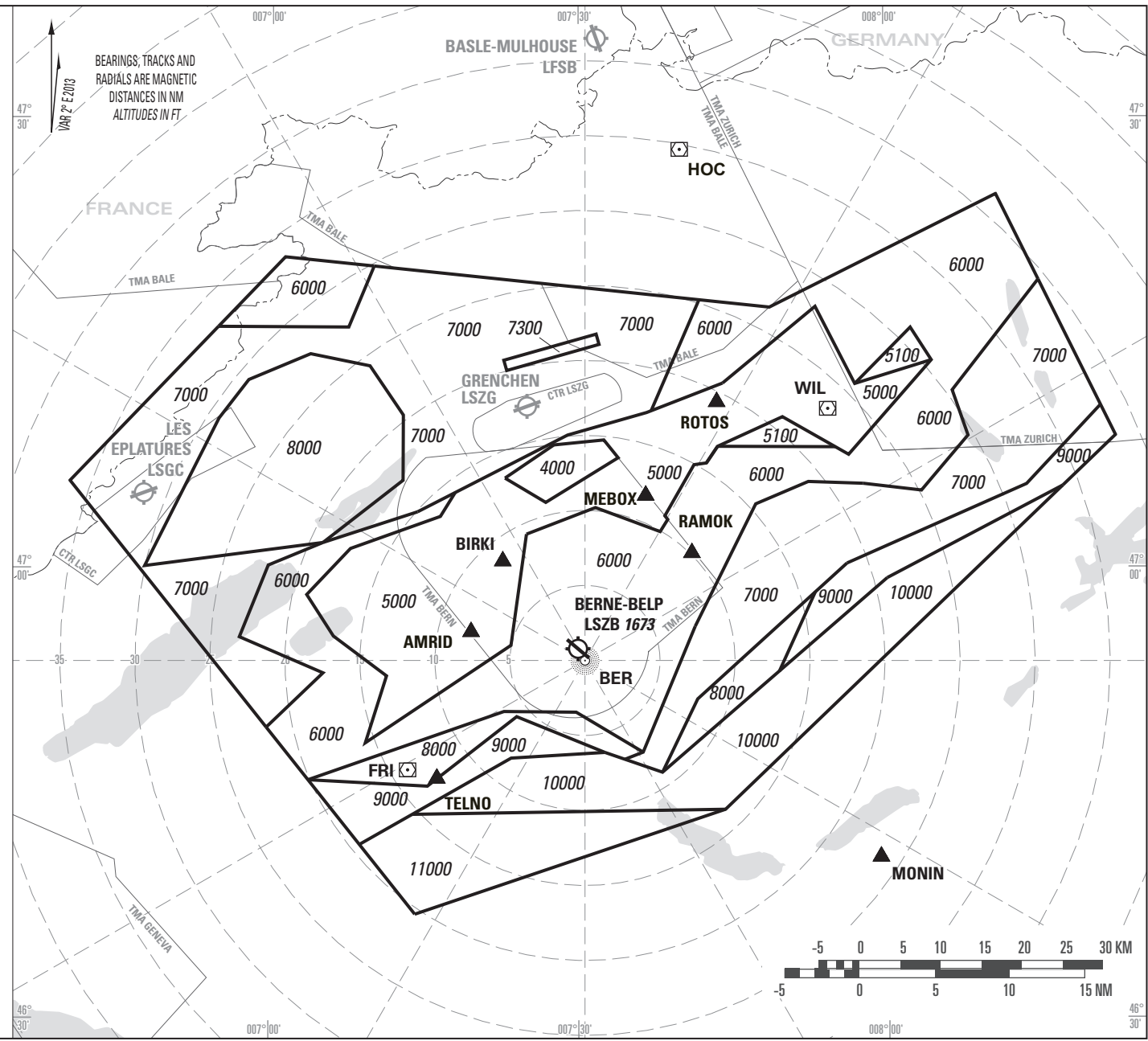
Altitudes: LSZB QNH.

Transition ALT: 6000

Minimum altitudes over Swiss territory are calculated according ICAO norms (PANS-ATM Doc 4444 & PANS-OPS Doc 8168).

Minimum altitudes are protected for low temperatures from minus 20 degrees to minus 5 degrees (LSZB temperature).

Sectors indicated all 30°, distances indicated all 5NM, based on BER NDB.



COR: Sector



**DO NOT USE FOR REAL LIFE NAVIGATION**

**NOTES:**

The minimum vectoring altitude chart shows the lowest altitude for the approach / departure sectors of LSZB which may be assigned to an IFR flight under radar vectoring.

The chart may only be used for cross-checking of altitudes assigned while under radar vectoring.

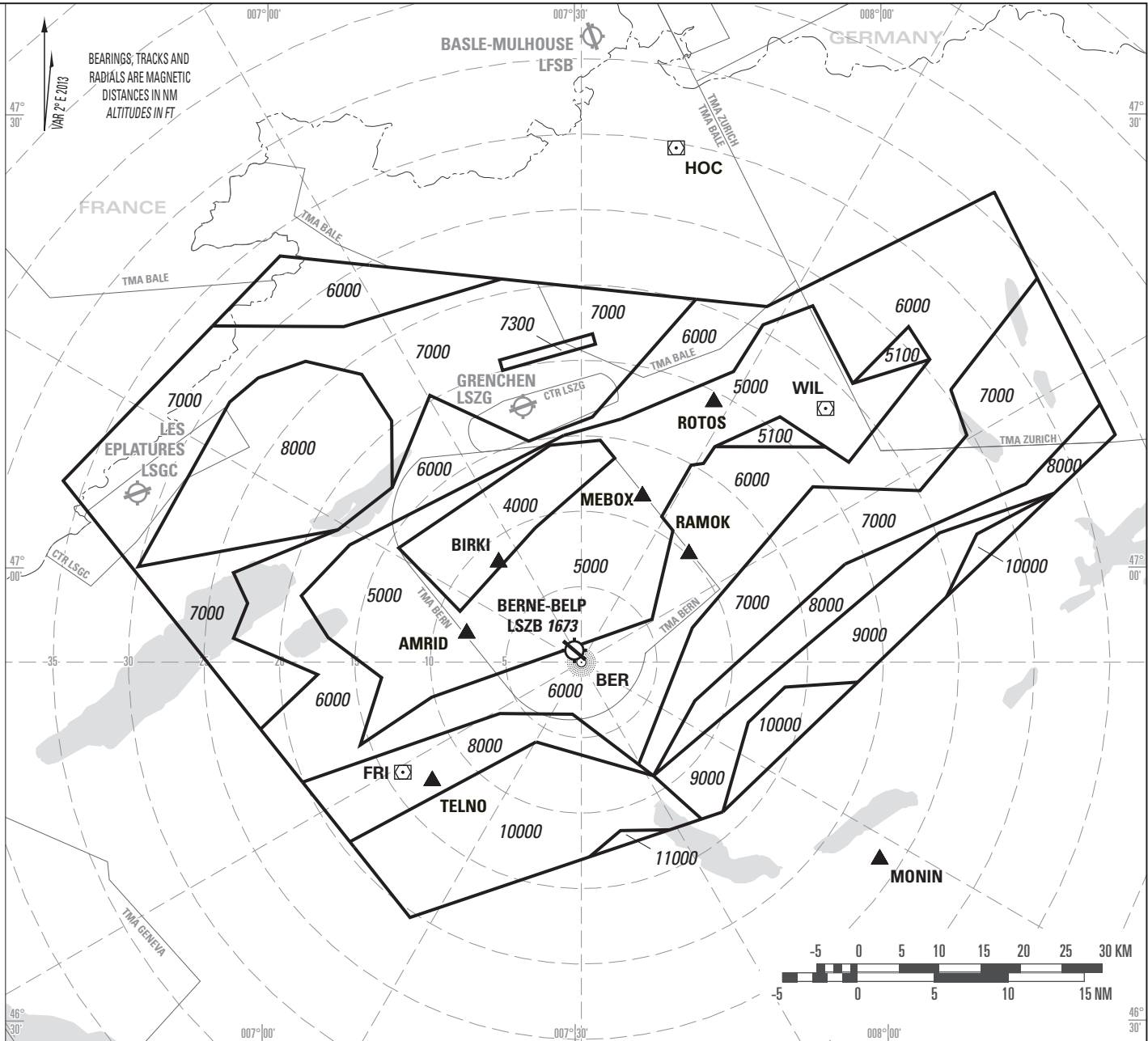
Altitudes: LSZB QNH.

Transition ALT: 6000

Minimum altitudes over Swiss territory are calculated according ICAO norms (PANS-ATM Doc 4444 & PANS-OPS Doc 8168).

Minimum altitudes are protected for low temperatures to minus 4 degrees (LSZB temperature).

Sectors indicated all 30°, distances indicated all 5NM, based on BER NDB.



COR: Sector