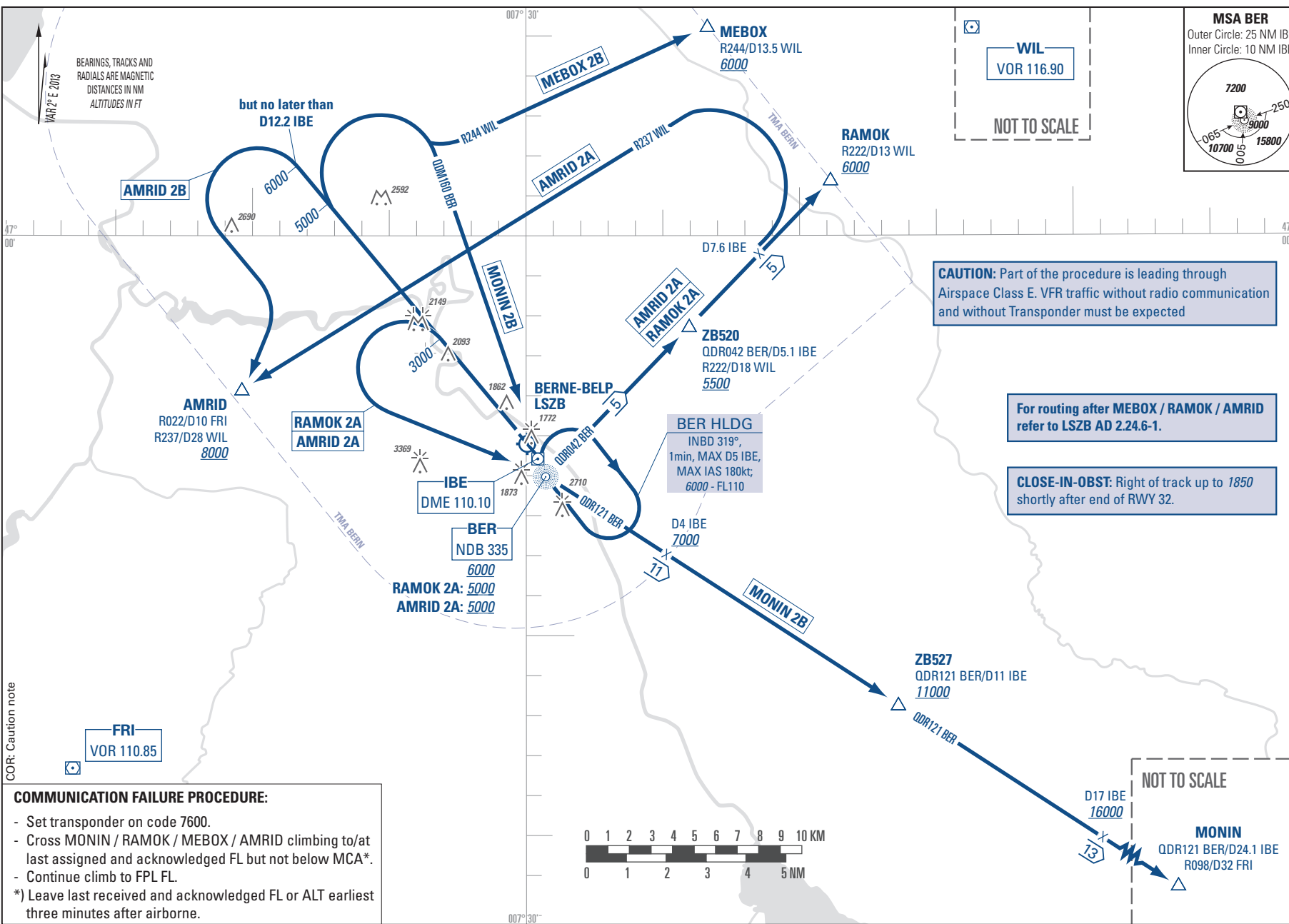


STANDARD INSTRUMENT DEPARTURE CHART  
(SID) - ICAO

TRANSITION LEVEL by ATC  
TRANSITION ALTITUDE 6000

BERNE-BELP LSZB  
SID RWY 32 - NON RNAV

**DO NOT USE FOR REAL LIFE NAVIGATION**

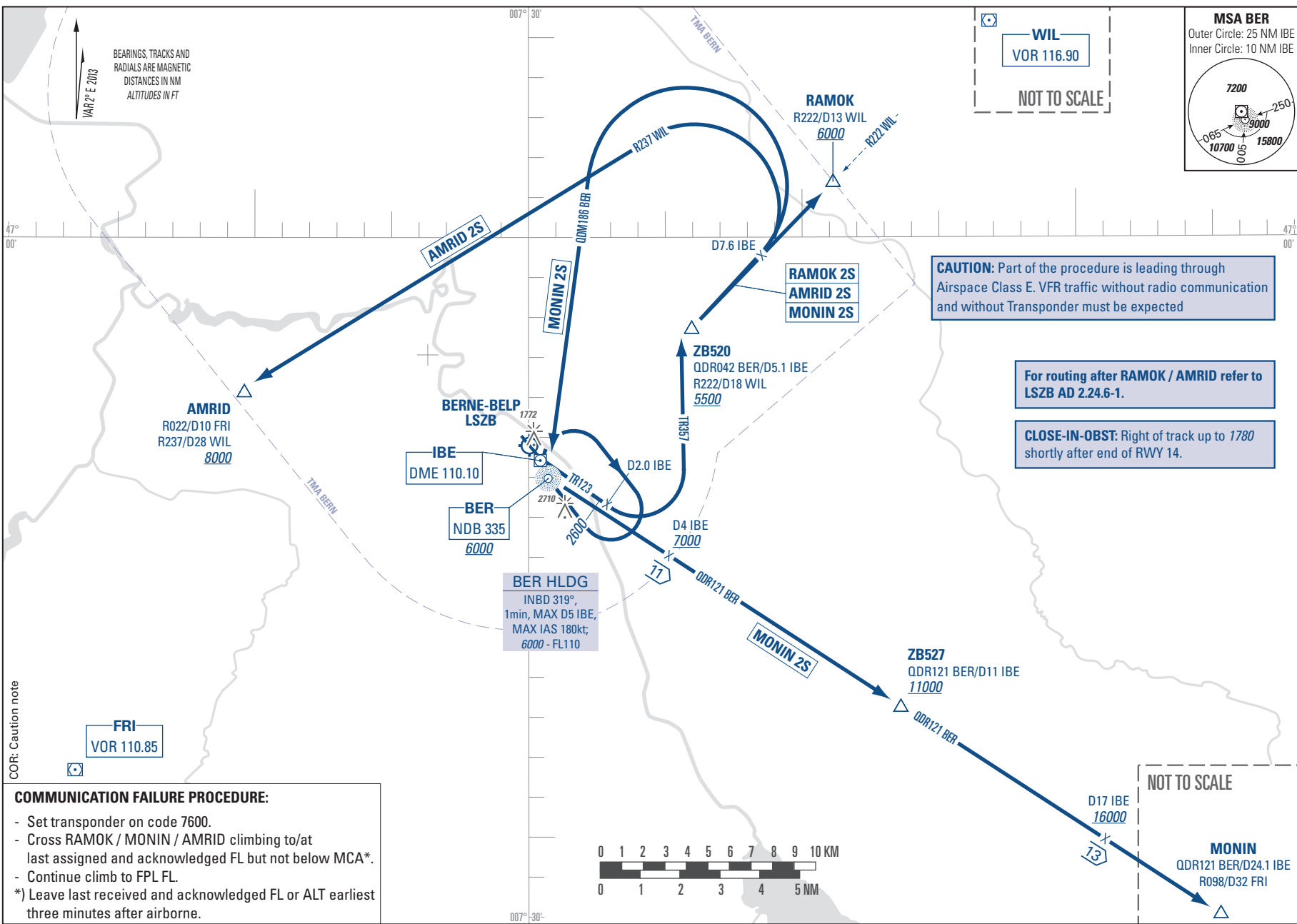


STANDARD INSTRUMENT DEPARTURE CHART  
(SID) - ICAO

TRANSITION LEVEL by ATC  
TRANSITION ALTITUDE 6000

BERNE-BELP LSZB  
SID RWY 14 - NON RNAV

**DO NOT USE FOR REAL LIFE NAVIGATION**



**COMMUNICATION FAILURE PROCEDURE:**

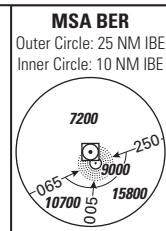
- Set transponder on code 7600.
- Cross RAMOK / MONIN / AMRID climbing to/at last assigned and acknowledged FL but not below MCA\*.
- Continue climb to FPL FL.
- \*) Leave last received and acknowledged FL or ALT earliest three minutes after airborne.

STANDARD INSTRUMENT DEPARTURE CHART  
(SID) - ICAO

TRANSITION LEVEL by ATC  
TRANSITION ALTITUDE 6000

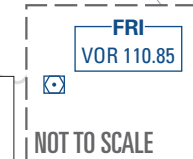
SID RWY 32 - NON RNAV (LOCAL)  
BERNE-BELP LSZB

**DO NOT USE FOR REAL LIFE NAVIGATION**



**BIRKI HLDG**  
INBD 138°,  
1min, MAX D12 IBE,  
MAX IAS 170kt;  
4000 - FL110

**BIRKI**  
R022/D15.5 FRI  
R244/D23.9 WIL  
QDR319 BER/D8.3 IBE  
4000



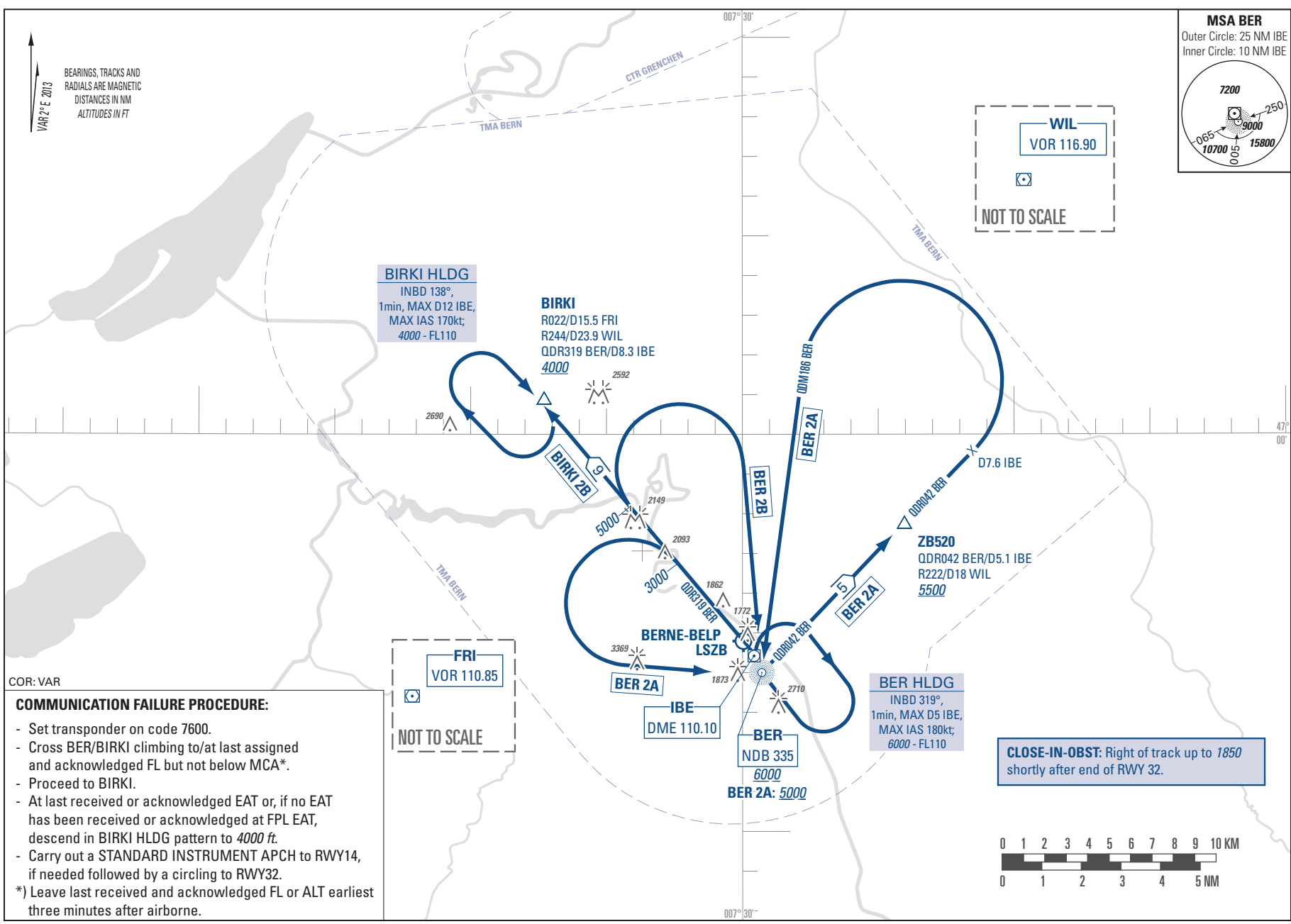
**ZB520**  
QDR042 BER/D5.1 IBE  
R222/D18 WIL  
5500

**BER HLDG**  
INBD 319°,  
1min, MAX D5 IBE,  
MAX IAS 180kt;  
6000 - FL110

**BERNE-BELP LSZB**  
QDR042 BER  
1772

**BER**  
NDB 335  
6000  
BER 2A: 5000

**CLOSE-IN-OBST:** Right of track up to 1850 shortly after end of RWY 32.



COR: VAR

**COMMUNICATION FAILURE PROCEDURE:**

- Set transponder on code 7600.
- Cross BER/BIRKI climbing to/at last assigned and acknowledged FL but not below MCA\*.
- Proceed to BIRKI.
- At last received or acknowledged EAT or, if no EAT has been received or acknowledged at FPL EAT, descend in BIRKI HLDG pattern to 4000 ft.
- Carry out a STANDARD INSTRUMENT APCH to RWY14, if needed followed by a circling to RWY32.

\*) Leave last received and acknowledged FL or ALT earliest three minutes after airborne.

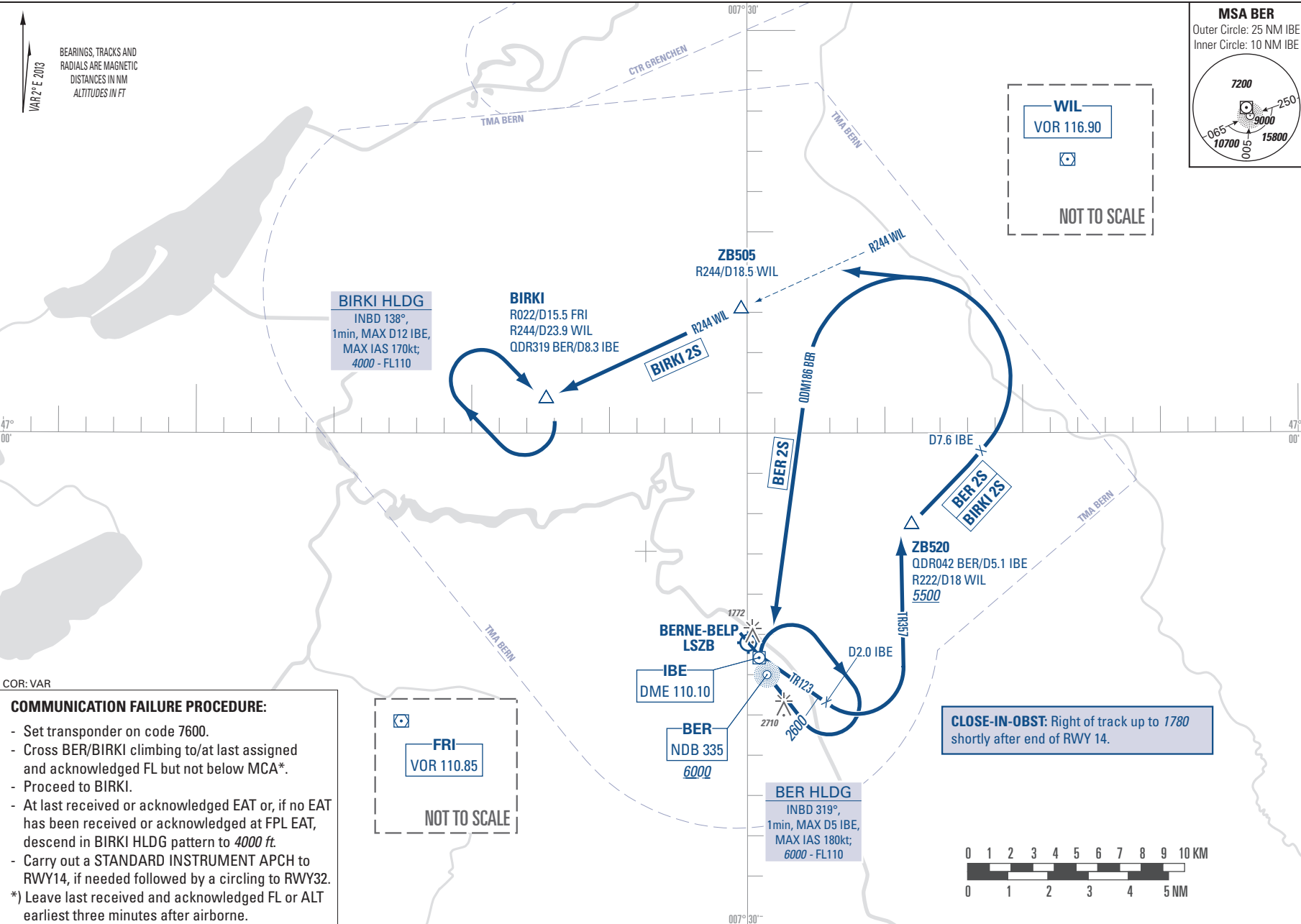
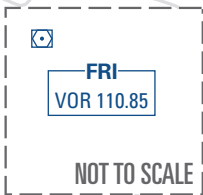
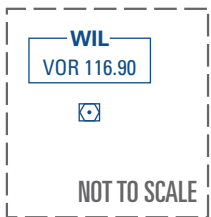
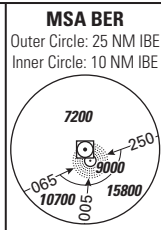
MAR 2<sup>e</sup> E 2013  
BEARINGS, TRACKS AND RADIALS ARE MAGNETIC  
DISTANCES IN NM  
ALTITUDES IN FT

STANDARD INSTRUMENT DEPARTURE CHART  
(SID) - (CAO)

TRANSITION LEVEL by ATC  
TRANSITION ALTITUDE 6000

BERNE-BELP LSZB  
SID RWY 14 - NON RNAV (LOCAL)

**DO NOT USE FOR REAL LIFE NAVIGATION**

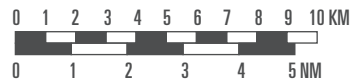


BEARINGS, TRACKS AND RADIALS ARE MAGNETIC  
DISTANCES IN NM  
ALTITUDES IN FT  
MAR 2<sup>e</sup> E 2013

**COMMUNICATION FAILURE PROCEDURE:**

- Set transponder on code 7600.
- Cross BER/BIRKI climbing to/at last assigned and acknowledged FL but not below MCA\*.
- Proceed to BIRKI.
- At last received or acknowledged EAT or, if no EAT has been received or acknowledged at FPL EAT, descend in BIRKI HLDG pattern to 4000 ft.
- Carry out a STANDARD INSTRUMENT APCH to RWY14, if needed followed by a circling to RWY32.
- \*) Leave last received and acknowledged FL or ALT earliest three minutes after airborne.

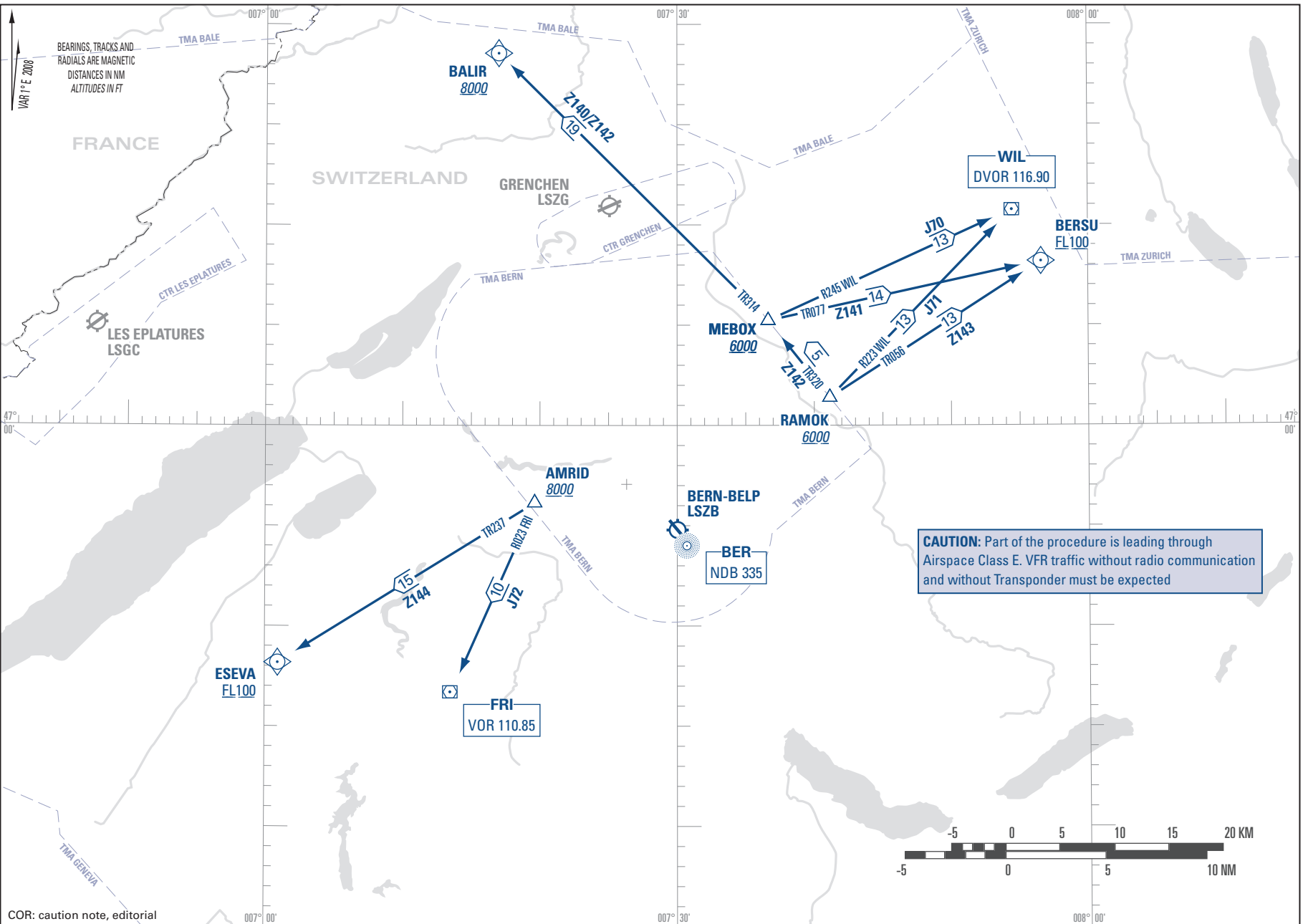
**CLOSE-IN-OBST:** Right of track up to 1780 shortly after end of RWY 14.



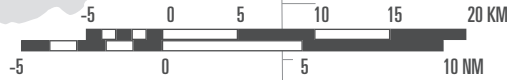
AREA CHART - ICAO

TRANSITION AFTER DEPARTURE  
ROUTES RAMOK / MEBOX / AMRID

BERNE-BELP LSZB



CAUTION: Part of the procedure is leading through Airspace Class E. VFR traffic without radio communication and without Transponder must be expected



COR: caution note, editorial