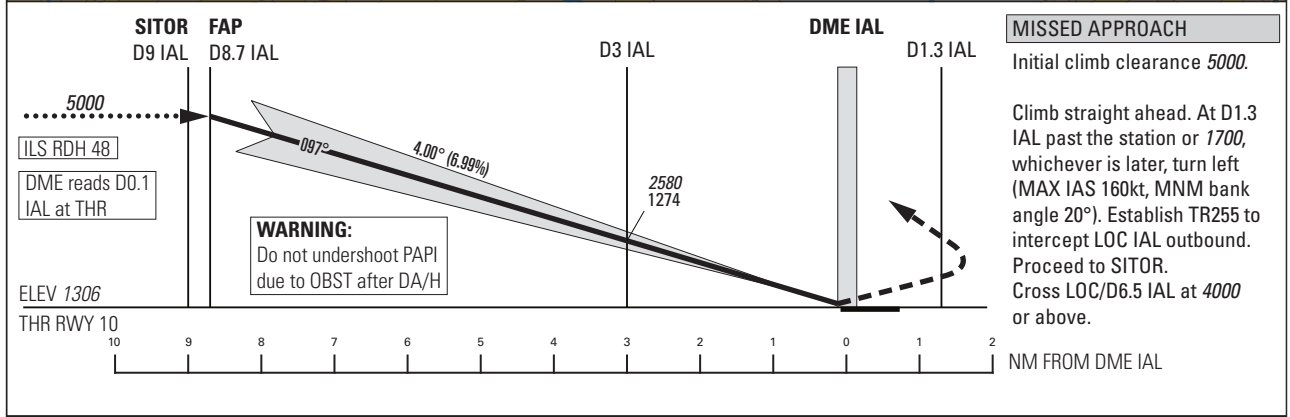
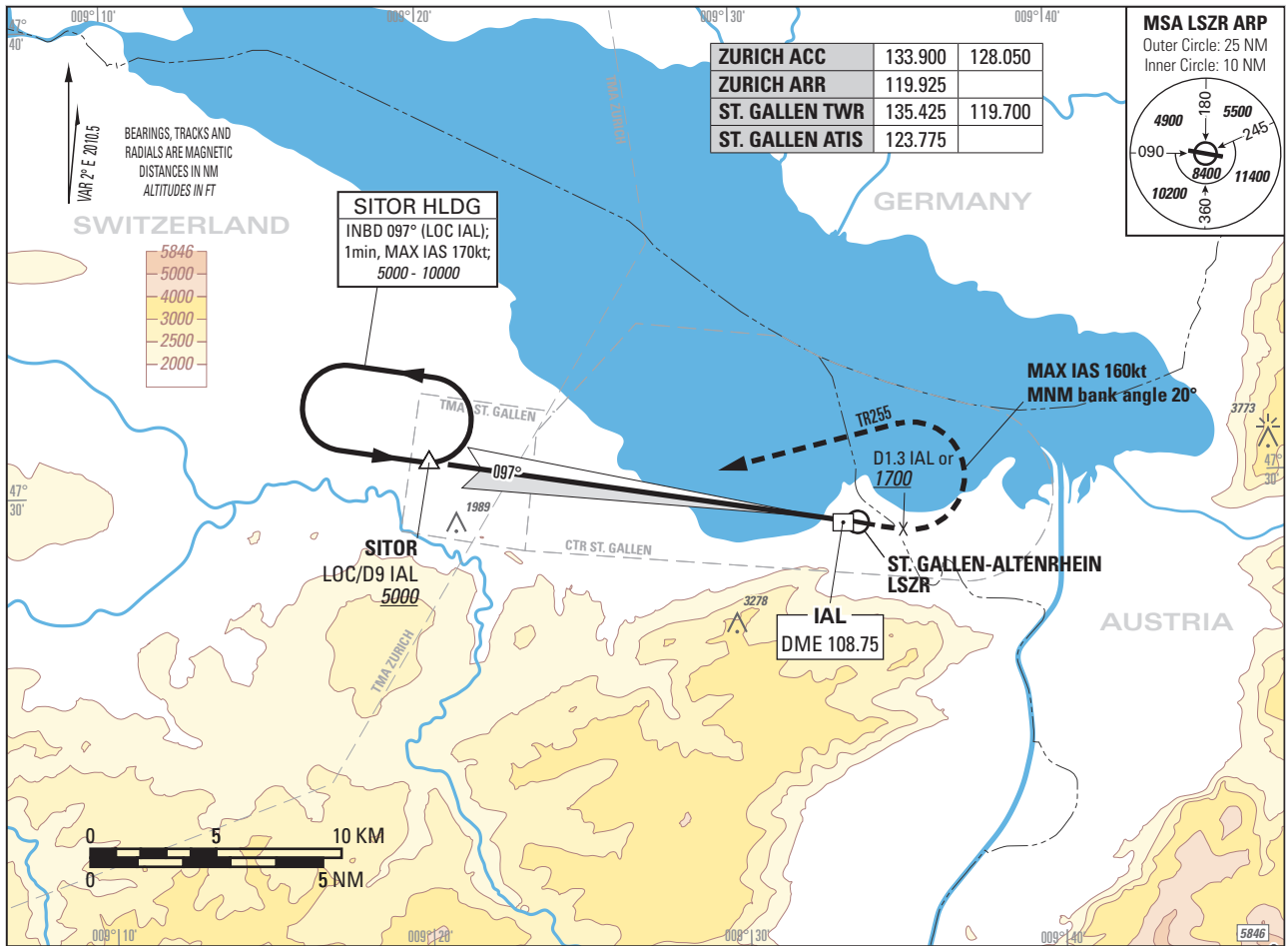


Instrument Approach Chart
(IAC) - ICAO

ELEV 1306ft

TRANSITION LEVEL by ATC
TRANSITION ALTITUDE 5000

ST. GALLEN-ALTENRHEIN LSZR
ILS RWY 10, 0.8° OFFSET LEFT
ACFT CAT A/B/C



OBSTACLE CLEARANCE ALTITUDE (HEIGHT) / OCA (H)	A	B	C
STRAIGHT-IN APPROACH	1642 (336)	1658 (352)	1673 (367)
CIRCLING ¹⁾	2170 (870)		2270 (970 ²⁾)
DECISION ALTITUDE (HEIGHT) / DA(H)	A	B	C
STRAIGHT-IN APPROACH	1806 (500)		

DME IAL	8.7	8	7	6	5	4	3	2	1
DIST THR	8.6	7.9	6.9	5.9	4.9	3.9	2.9	1.9	0.9
ALT FT	5000	4710	4280	3860	3430	3010	2580	2160	1730

ROD	GS kt	80	100	120	140	160	180
	FT/MIN	567	708	849	991	1133	1274

NOTE

- ¹⁾ Circling north of AP only.
- ²⁾ MAX IAS 160kt due airspace.

REMARK

Uncategorized ILS APCH RWY 10 due to runway type: non-instrument runway.
ILS 10 signal fulfils ICAO Annex 10, CAT I specifications.

CAUTION

- 0.2NM before THR 10 Visual Segment Surface (VSS) penetrated by trees up to 1380ft.
- This is not a standard approach angle.
- On 4° APCH angle and GS > 140kt resulting ROD will be > 1000ft/min.

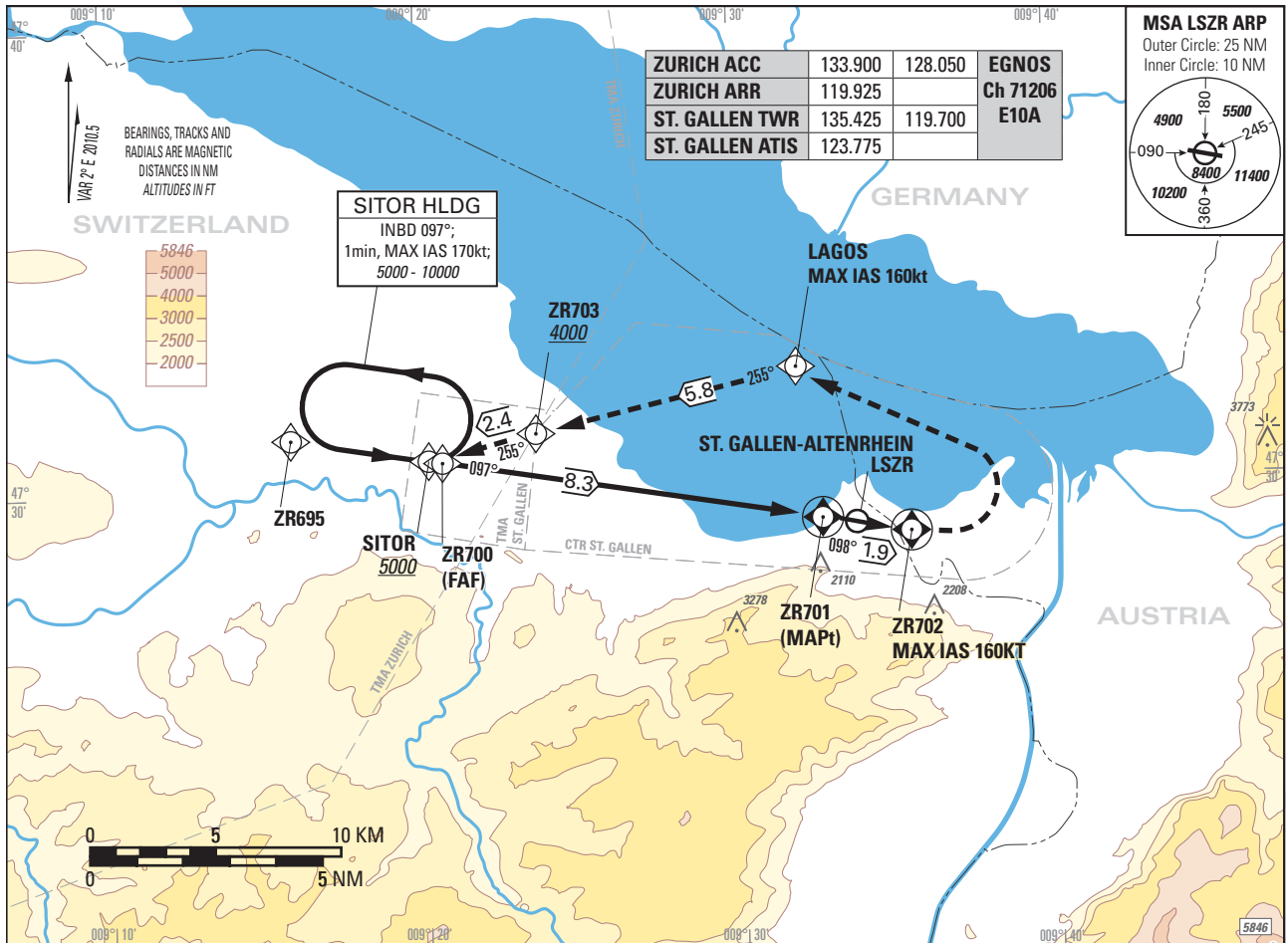
COR: TWR FREQ, new layout

Instrument Approach Chart
(IAC) - ICAO

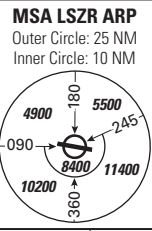
ELEV 1306ft

TRANSITION LEVEL by ATC
TRANSITION ALTITUDE 5000

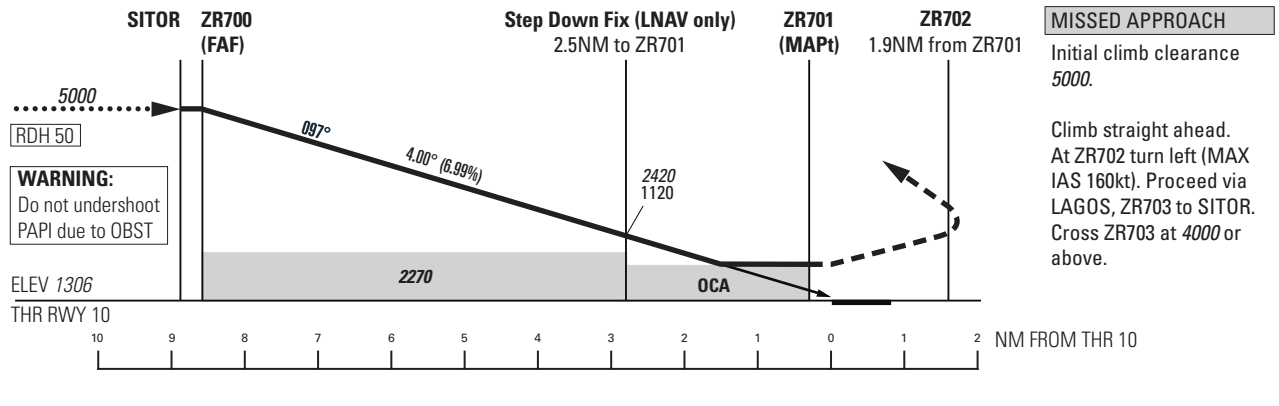
ST. GALLEN-ALTENRHEIN LSZR
RNAV (GNSS) RWY 10, 0.8° OFFSET LEFT
ACFT CAT A/B/C



ZURICH ACC	133.900	128.050	EGNOS Ch 71206 E10A
ZURICH ARR	119.925		
ST. GALLEN TWR	135.425	119.700	
ST. GALLEN ATIS	123.775		



SITOR HLDG
INBD 097°;
1min, MAX IAS 170kt;
5000 - 10000



Missed APCH climb gradient requirement	STRAIGHT-IN APPROACH		
	A	B	C
	OCA(H) LNAV		
2.5%	2190 (890)		
3.3%	2060 (760)		
	OCA(H) LPV		
2.5%	1890 (590)	1910 (610)	1920 (620)
4.0%	1750 (450)	1760 (460)	1780 (480)
	DA(H) LPV		
4.0%	1810 (500)		
	A	B	C
CIRCLING ¹⁾	2170 (870)		2270 (970) ²⁾

ROD	GS kt				
	80	100	120	140	
	567	708	849	991	

DIST ZR701	8.3	8	7	6	5	4	3	2	1
DIST THR	8.6	8.3	7.3	6.3	5.3	4.3	3.3	2.3	1.3
ALT FT	5000	4890	4460	4040	3610	3190	2760	2340	1910

NOTE
¹⁾ Circling north of AP only.
²⁾ MAX IAS 160kt due airspace.

CAUTION
 - 0.2NM before THR 10 Visual Segment Surface (VSS) penetrated by trees up to 1380ft.
 - This is not a standard approach angle.
 - On 4° APCH angle and GS > 140kt resulting ROD will be > 1000ft/min.

COR: TWR FREQ, new layout